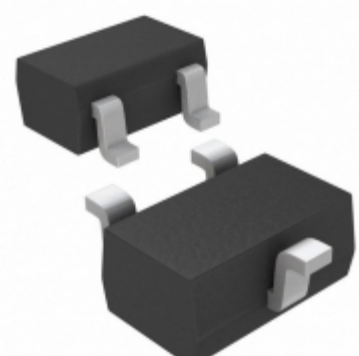


**MAX809MEXR+T**



**Part Number:** [MAX809MEXR+T](#)  
**Manufacturer:** [Maxim Integrated](#)  
**Description:** IC RESET CIRC MPU SC70-3  
**Data sheet:** [MAX803,809,810](#)  
[Part Numbering System](#)

**RoHS Status:** Lead free / RoHS Compliant  
**Ship From:** Hong Kong  
**Shipment Way:** DHL/Fedex/TNT/UPS/EMS

Images are for reference only.  
 See Product Specifications for product details.  
**Buy MAX809MEXR+T with confidence from Component-World.HK, 1 Year Warranty**

[Request For Quotation](#)

**PRODUCT PARAMETER**

<b>Part Number</b>	MAX809MEXR+T	<b>Manufacturer</b>	<a href="#">Maxim Integrated</a>
<b>Description</b>	IC RESET CIRC MPU SC70-3	<b>Lead Free Status / RoHS Status</b>	Lead free / RoHS Compliant
<b>Quantity Available</b>	61033 pcs	<b>Data sheet</b>	<a href="#">MAX803,809,810</a> <a href="#">Part Numbering System</a>
<b>Category</b>	<a href="#">Integrated Circuits (ICs)</a>	<b>Voltage - Threshold</b>	4.38V
<b>Type</b>	Simple Reset/Power-On Reset	<b>Supplier Device Package</b>	SC-70-3
<b>Series</b>	-	<b>Reset Timeout</b>	140 ms Minimum
<b>Reset</b>	Active Low	<b>Packaging</b>	Tape & Reel (TR)
<b>Package / Case</b>	SC-70, SOT-323	<b>Output</b>	Push-Pull, Totem Pole
<b>Other Names</b>	MAX809MEXR+T-ND MAX809MEXR+TTR MAX809MEXR+TTRINACTIVE-ND	<b>Operating Temperature</b>	-40°C ~ 125°C (TA)
<b>Number of Voltages Monitored</b>	1	<b>Mounting Type</b>	Surface Mount
<b>Moisture Sensitivity Level (MSL)</b>	1 (Unlimited)	<b>Manufacturer Standard Lead Time</b>	6 Weeks
<b>Lead Free Status / RoHS Status</b>	Lead free / RoHS Compliant	<b>Detailed Description</b>	Supervisor Push-Pull, Totem Pole 1 Channel SC-70-3
<b>Base Part Number</b>	MAX809		

Component-World.com is a Reliable Stocking Distributor of Electronic Components. We specialize in all Maxim Integrated series electronic components. We have 61033 pieces of Maxim Integrated MAX809MEXR+T in stock available now. Request a quote from electronics components distributor at Component-World.com, our sales team will contact you within 24 hours.

RFQ Email: [info@Components-World.com](mailto:info@Components-World.com)

**RELATED PRODUCTS**

	<b>Part#:</b> <a href="#">MAX809REUR-T</a> <b>Description:</b> IC MPU SUPRVSRY CIRC 2.63V SOT23	<b>Manufacturers:</b> <a href="#">Maxim Integrated</a>	<a href="#">RFQ</a>
	<b>Part#:</b> <a href="#">MAX809LEXR+T10</a> <b>Description:</b> IC RESET CIRC MPU SC70-3	<b>Manufacturers:</b> <a href="#">Maxim Integrated</a>	<a href="#">RFQ</a>
	<b>Part#:</b> <a href="#">MAX809LEUR-T</a> <b>Description:</b> IC MPU RESET CIRC 4.63V SOT23	<b>Manufacturers:</b> <a href="#">Maxim Integrated</a>	<a href="#">RFQ</a>
	<b>Part#:</b> <a href="#">MAX809LEUR+T</a> <b>Description:</b> IC MPU RESET CIRC 4.63V SOT23	<b>Manufacturers:</b> <a href="#">Maxim Integrated</a>	<a href="#">RFQ</a>
	<b>Part#:</b> <a href="#">MAX809LEXR+T</a> <b>Description:</b> IC RESET CIRC MPU SC70-3	<b>Manufacturers:</b> <a href="#">Maxim Integrated</a>	<a href="#">RFQ</a>
	<b>Part#:</b> <a href="#">MAX809MTR</a> <b>Description:</b> IC MPU SUPERVISORY 4.38V SOT23	<b>Manufacturers:</b> <a href="#">AMI Semiconductor / ON Semiconductor</a>	<a href="#">RFQ</a>
	<b>Part#:</b> <a href="#">MAX809MEUR+T</a> <b>Description:</b> IC MPU/RESET CIRC SOT23-3	<b>Manufacturers:</b> <a href="#">Maxim Integrated</a>	<a href="#">RFQ</a>
	<b>Part#:</b> <a href="#">MAX809JTRG</a> <b>Description:</b> IC MPU SUPERVISORY 4.0V SOT23	<b>Manufacturers:</b> <a href="#">AMI Semiconductor / ON Semiconductor</a>	<a href="#">RFQ</a>
	<b>Part#:</b> <a href="#">MAX809LTRG</a> <b>Description:</b> IC MPU SUPERVISORY 4.63V SOT23	<b>Manufacturers:</b> <a href="#">AMI Semiconductor / ON Semiconductor</a>	<a href="#">RFQ</a>
	<b>Part#:</b> <a href="#">MAX809RTRG</a> <b>Description:</b> IC MPU SUPERVISORY 2.63V SOT23	<b>Manufacturers:</b> <a href="#">AMI Semiconductor / ON Semiconductor</a>	<a href="#">RFQ</a>
	<b>Part#:</b> <a href="#">MAX809REUR+T10</a> <b>Description:</b> IC RESET CIRC MPU SOT23-3	<b>Manufacturers:</b> <a href="#">Maxim Integrated</a>	<a href="#">RFQ</a>
	<b>Part#:</b> <a href="#">MAX809REXR+T10</a> <b>Description:</b> IC RESET CIRC MPU SC70-3	<b>Manufacturers:</b> <a href="#">Maxim Integrated</a>	<a href="#">RFQ</a>
	<b>Part#:</b> <a href="#">MAX809REXR+T</a> <b>Description:</b> IC RESET CIRC MPU SC70-3	<b>Manufacturers:</b> <a href="#">Maxim Integrated</a>	<a href="#">RFQ</a>
	<b>Part#:</b> <a href="#">MAX809REUR+CF1</a> <b>Description:</b> IC MPU SUPERVISORY	<b>Manufacturers:</b> <a href="#">Maxim Integrated</a>	<a href="#">RFQ</a>
	<b>Part#:</b> <a href="#">MAX809LTR</a> <b>Description:</b> IC MPU SUPERVISORY 4.63V SOT23	<b>Manufacturers:</b> <a href="#">AMI Semiconductor / ON Semiconductor</a>	<a href="#">RFQ</a>
	<b>Part#:</b> <a href="#">MAX809MTRG</a> <b>Description:</b> IC MPU SUPERVISORY 4.38V SOT23	<b>Manufacturers:</b> <a href="#">AMI Semiconductor / ON Semiconductor</a>	<a href="#">RFQ</a>
	<b>Part#:</b> <a href="#">MAX809MEUR+T10</a> <b>Description:</b> IC RESET CIRC MPU SOT23-3	<b>Manufacturers:</b> <a href="#">Maxim Integrated</a>	<a href="#">RFQ</a>
	<b>Part#:</b> <a href="#">MAX809REUR+T</a> <b>Description:</b> IC MPU/RESET CIRC SOT23-3	<b>Manufacturers:</b> <a href="#">Maxim Integrated</a>	<a href="#">RFQ</a>
	<b>Part#:</b> <a href="#">MAX809LEUR+T10</a> <b>Description:</b> IC RESET CIRC MPU SOT23-3	<b>Manufacturers:</b> <a href="#">Maxim Integrated</a>	<a href="#">RFQ</a>
	<b>Part#:</b> <a href="#">MAX809RTR</a> <b>Description:</b> IC MPU SUPERVISORY 2.63V SOT23	<b>Manufacturers:</b> <a href="#">AMI Semiconductor / ON Semiconductor</a>	<a href="#">RFQ</a>

**Related keywords for MAX809MEXR+T**

Maxim Integrated MAX809MEXR+T	MAX809MEXR+T distributor	MAX809MEXR+T supplier	MAX809MEXR+T price
MAX809MEXR+T download datasheet	MAX809MEXR+T datasheet	MAX809MEXR+T stock	buy MAX809MEXR+T
Maxim Integrated MAX809MEXR+T			